

# U6MIDI PRO

## USER MANUAL V06

Hello, thank you for purchasing CME's professional product!

Please read this manual completely before using this product. The pictures in the manual are for illustration purposes only, the actual product may vary. For more technical support content and videos, please visit this page: [www.cme-pro.com/support/](http://www.cme-pro.com/support/)

### IMPORTANT INFORMATION

- **WARNING**

Improper connection may cause damage to the device.

- **COPYRIGHT**

Copyright © 2022 CME Pte. Ltd. All rights reserved. CME is a registered trademark of CME Pte. Ltd. in Singapore and/or other countries. All other trademarks or registered trademarks are the property of their respective owners.

- **LIMITED WARRANTY**

CME provides a one-year standard Limited Warranty for this product only to the person or entity that originally purchased this product from an authorized dealer or distributor of CME. The warranty period starts on the date of purchase of this product. CME

warrants the included hardware against defects in workmanship and materials during the warranty period. CME does not warrant against normal wear and tear, nor damage caused by accident or abuses of the purchased product. CME is not responsible for any damage or data loss caused by improper operation of the equipment. You are required to provide a proof of purchase as a condition of receiving warranty service. Your delivery or sales receipt, showing the date of purchase of this product, is your proof of purchase. To obtain service, call or visit the authorized dealer or distributor of CME where you purchased this product. CME will fulfill the warranty obligations according to local consumer laws.

## ● SAFETY INFORMATION

Always follow the basic precautions listed below to avoid the possibility of serious injury or even death from electrical shock, damages, fire, or other hazards. These precautions include, but are not limited to, the following:

- Do not connect the instrument during a thunder.
- Do not set up the cord or outlet to a humid place unless the outlet is specially designed for humid places.
- If the instrument needs to be powered by AC, do not touch the bare part of the cord or the connector when the power cord is connected to the AC outlet.
- Always follow the instructions carefully when setting up the instrument.
- Do not expose the instrument to rain or moisture, to avoid fire and/or electrical shock.

- Keep the instrument away from electrical interface sources, such as fluorescent light and electrical motors.
- Keep the instrument away from dust, heat, and vibration.
- Do not expose the instrument to sunlight.
- Do not place heavy objects on the instrument; do not place containers with liquid on the instrument.
- Do not touch the connectors with wet hands

## PACKAGE CONTENTS

1. U6MIDI Pro Interface
2. USB Cable
3. User Manual

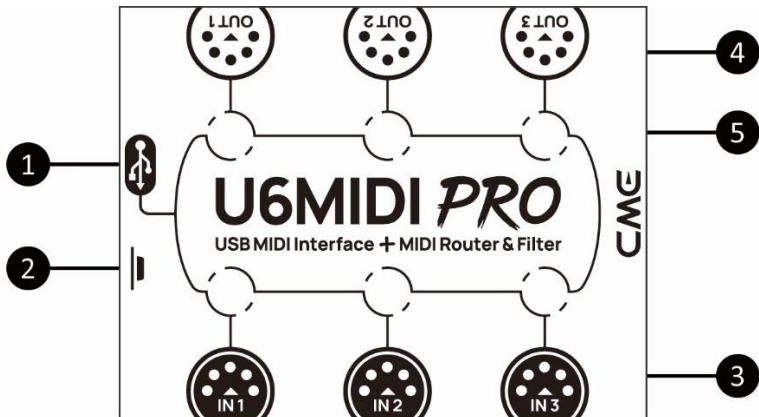
## INTRODUCTION

The U6MIDI Pro is a professional USB MIDI interface and standalone MIDI router that provides a very compact, plug-and-play MIDI connection to any USB-equipped Mac or Windows computer, as well as iOS (via the Apple USB Connectivity Kit) and Android tablets or phones (via Android OTG cable).

U6MIDI Pro provides standard 5-pin MIDI ports across 3 MIDI IN and 3 MIDI OUT, supports a total of 48 MIDI channels and is powered by a standard USB bus or USB power supply.

U6MIDI Pro adopts the latest 32-bit high-speed processing chip, which enables fast transmission speeds over USB to meet the throughput of large data MIDI messages and to achieve the best latency and accuracy on sub-millisecond level. With the free “UxMIDI Tools” software (developed by CME), you enable flexible routing, remapping and filter settings for this interface. All settings will be automatically saved in the interface. This interface can also be used standalone without connecting to a computer, providing the powerful functions of a MIDI merger, MIDI thru/splitter, and MIDI router while powered via a standard USB charger or power bank.

U6MIDI Pro connects to all MIDI products with standard MIDI sockets, such as: synthesizers, MIDI controllers, MIDI interfaces, keytars, electric wind instruments, v-accordions, electronic drums, electric pianos, electronic portable keyboards, audio interfaces, digital mixers, etc.



## 1. USB MIDI Port

U6MIDI Pro has a USB-C socket for connecting to a computer to transmit MIDI data, or connecting to a USB power supply for standalone use.

- When used with a computer, directly connect this interface through the matching USB cable or connect it to the USB socket of the computer through the USB hub to start using the interface. The computer's USB port can power the U6MIDI Pro. In different operating systems and versions, U6MIDI Pro may be displayed as a different class device name, such as "U6MIDI Pro" or "USB audio device", and the name will be followed by the port number 0/1/2 or 1/2/3, and the words IN/OUT.
- When used as a standalone MIDI router, mapper and filter without computer, connect this interface to a standard USB charger or power bank through the matching USB cable to start using the interface.

**Note:** Please choose a power bank with Low Power Charging mode (for Bluetooth headphones such as AirPods, and fitness trackers) and does not have automatic power saving function.

**Note:** The USB ports in the UxMIDI Tools software are virtual ports that run through a single USB-C port. The U6MIDI Pro is not a USB host device, and the USB port is only for connecting to operating systems, not for connecting MIDI controllers via USB.

## 2. Button

- With the power on, quickly press the button, and the U6MIDI Pro will send "all notes off" messages of all 16 MIDI channels

per output ports. This will eliminate unexpected long notes from external devices.

- In the power-on state, press and hold the button for more than 5 seconds and then release, the U6MIDI Pro will be reset to the factory default state.

### **3. MIDI Input 1/2/3 Ports**

These three ports are used to receive MIDI messages from external MIDI devices.

***Note:** Depending on the user's settings for MIDI routing, the interface may need to route incoming messages to multiple designated USB ports and/or MIDI output ports. If messages need to be forwarded to more than two ports at the same time, the interface will automatically replicate the complete messages for the different ports.*

### **4. MIDI Output 1/2/3 Ports**

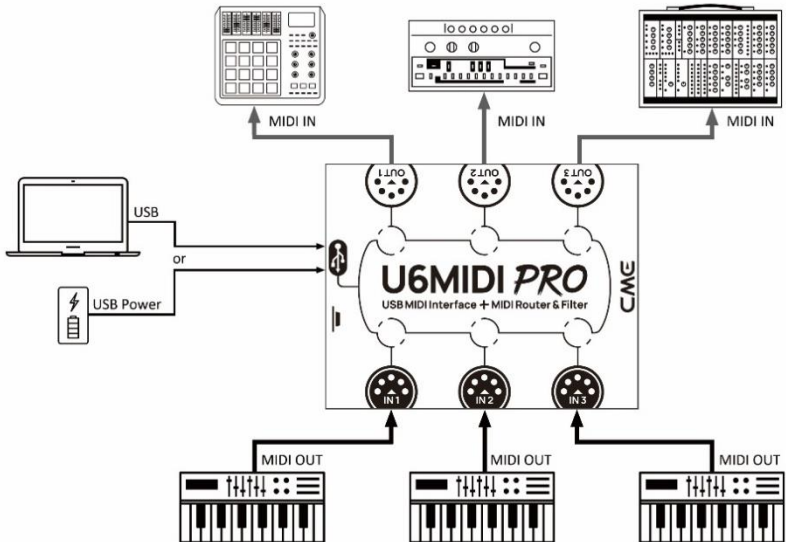
These three ports are used to send MIDI messages to external MIDI devices.

***Note:** Depending on the user's MIDI routing settings, the interface may receive MIDI messages from multiple designated USB ports and/or MIDI input ports. If you need to send messages from more than two ports to a MIDI output port at the same time, the interface will automatically merge all the messages.*

### **5. LED Indicators**

U6MIDI Pro has a total of 6 LED green indicators, which are used to indicate the working status of the 3 MIDI IN and 3 MIDI OUT ports respectively. When a certain port has MIDI data being transmitted, the corresponding indicator light will flash accordingly.

# CONNECTION



1. Use the provided USB cable to connect the U6MIDI Pro to the computer or USB host device. Multiple U6MIDI Pros can be connected to a computer via USB hub.
2. Use a MIDI cable to connect the MIDI IN port of the U6MIDI Pro to the MIDI OUT or THRU of other MIDI devices, and connect the MIDI OUT port of the U6MIDI Pro to the MIDI IN of other MIDI devices.
3. When the power is on, the LED indicator of the U6MIDI Pro will light up, and the computer will automatically detect the device. Open the music software, set the MIDI input and output ports to U6MIDI Pro on the MIDI settings page, and get started. See the

manual of your software for further details.

**Note:** *If you want to use U6MIDI Pro standalone without connecting to a computer, you can directly connect a USB power supply or power bank.*

## SOFTWARE SETTINGS

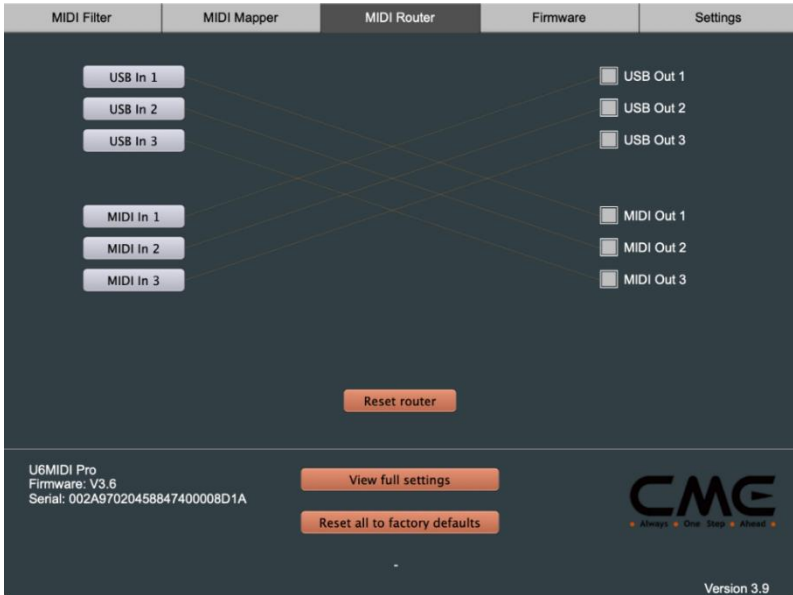
Please visit [www.cme-pro.com/support/](http://www.cme-pro.com/support/) to download the free software “UxMIDI Tools” for macOS or Windows (compatible with macOS X and Windows 7 - 64bit or higher) and user manual. You can use it to upgrade the firmware of U6MIDI Pro products at any time to get the latest advanced features. At the same time, you can also perform a variety of flexible settings.

### 1. MIDI Router Settings

MIDI Router is used to view and configure the signal flow of MIDI messages in your CME USB MIDI hardware device.

**Note:** *All Router settings will be automatically saved to the internal memory of the U6MIDI Pro.*





## 2. MIDI Mapper settings

MIDI Mapper is used to reassign (remap) the input data of the connected and selected device so that it can be output according to custom rules that are defined by you.

**Note:** Before you can use the MIDI Mapper function, the U6MIDI Pro's firmware must be updated to version 3.6 (or higher), and the UxMIDI Tools software must be updated to version 3.9 (or higher).

**Note:** All Mapper settings will be automatically saved to the internal memory of the U6MIDI Pro.

### 3. MIDI Filter Settings

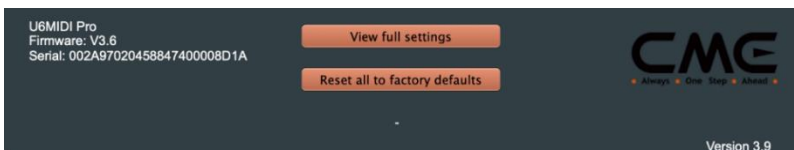
MIDI Filter is used to block certain types of MIDI message in a selected input or output port it no longer is passed through.

**Note:** All Filter settings will be automatically saved to the internal memory of the U6MIDI Pro.



#### 4. View full settings

The View Full settings button is used to view the filter, mapper, and router settings for each port of the current device - in one convenient overview.

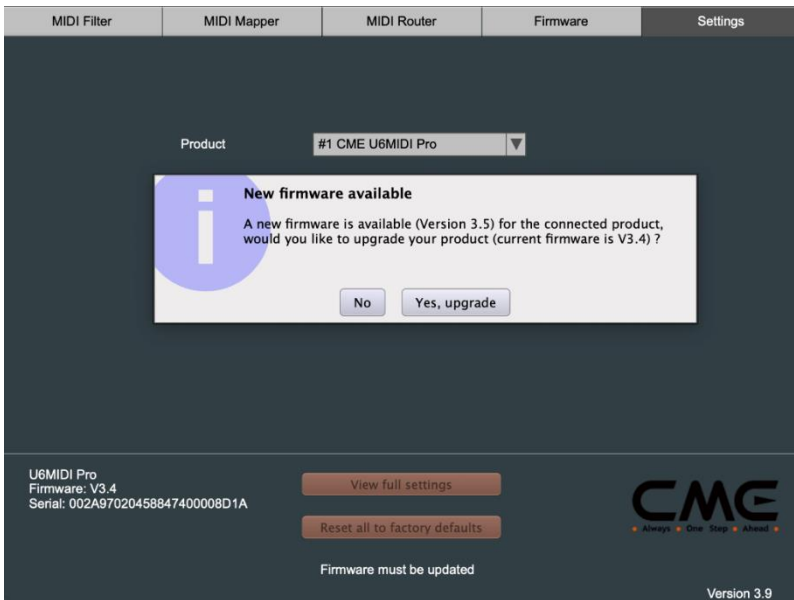


#### 5. Firmware Upgrade

When your computer is connected to the internet, the software

automatically detects whether the currently connected CME USB MIDI hardware device is running the latest firmware and requests an update if necessary.

**Note:** After each upgrade to a new firmware version, it is recommended to restart the U6MIDI Pro.



## 6. Settings

The Settings page is used to select the CME USB MIDI hardware device model and port to be set up and operated by the software. When a new device is connected to your computer, use the [Rescan MIDI] button to rescan the newly connected CME USB MIDI hardware device so that it appears in the drop-down boxes for Product and Ports. If you have multiple CME USB MIDI hardware

devices connected at the same time, please select the product and port you want to set up here.

The screenshot shows the 'Settings' tab of the MIDI Mapper software. It features three dropdown menus for 'Product', 'MIDI Input', and 'MIDI Output', all set to 'U6MIDI Pro' related options. A 'Rescan MIDI' button is positioned to the right of the MIDI Input dropdown. At the bottom left, device information is displayed: 'U6MIDI Pro', 'Firmware: V3.6', and 'Serial: 002A97020458847400008D1A'. Two orange buttons, 'View full settings' and 'Reset all to factory defaults', are located below the device info. The CME logo with the tagline 'Always One Step Ahead' is on the bottom right, and 'Version 3.9' is in the bottom right corner.

MIDI Filter	MIDI Mapper	MIDI Router	Firmware	Settings
	Product	#1 CME U6MIDI Pro		
	MIDI Input	U6MIDI Pro Port 1		Rescan MIDI
	MIDI Output	U6MIDI Pro Port 1		

U6MIDI Pro  
Firmware: V3.6  
Serial: 002A97020458847400008D1A

View full settings

Reset all to factory defaults

**CME**  
Always One Step Ahead

Version 3.9

## SYSTEM REQUIREMENTS

### Windows:

- Any PC with a USB port.
- Operating System: Windows XP (SP3) / Vista (SP1) / 7 / 8 / 10 / 11 or higher.

### Mac OS X:

- Any Apple Macintosh computer with a USB port.
- Operating System: Mac OS X 10.6 or later.

**iOS:**

- Any iPad, iPhone, iPod Touch series products. Requires separate purchase of Apple Camera Connection Kit or Lightning to USB Camera Adapter.
- Operating system: Apple iOS 5.1 or later.

**Android:**

- Any tablet and mobile phone. Requires separate purchase of USB OTG adapter cable.
- Operating System: Google Android 5 or higher.

## SPECIFICATIONS

Technology	Standard USB MIDI, Compliant with USB class, Plug and Play
MIDI Connectors	3x 5-pin MIDI Inputs, 3x 5-pin MIDI Outputs
LED Indicators	6 LED lights
Compatible Devices	Devices with standard MIDI sockets, Computers with USB port and USB Host Devices
MIDI messages	All messages in the MIDI standard, including notes, controllers, clocks, sysex, MIDI timecode, MPE
Transmission Delay	Close to 0ms
Power Supply	USB-C Socket. Powered via Standard 5V USB bus or charger

Firmware Upgrade	Upgradable via USB port using UxMIDI Tools
Power Consumption	150 mW
Size	82.5 mm (L) x 64 mm (W) x 33.5 mm (H) 3.25 in (L) x 2.52 in (W) x 1.32 in (H)
Weight	100 g/3.5 oz

Specifications are subject to change without notice.

## FAQ

- **The LED light of U6MIDI Pro does not light up:**
  - Please check if the USB plug is inserted into the USB port of the computer or host device.
  - Please check if the connected computer or host device is powered on.
  - Please check if the USB port of the connected host device supplies power (ask the device manufacturer for information)?
- **The computer does not receive MIDI messages when playing a MIDI keyboard:**
  - Please check if the U6MIDI Pro is correctly selected as the MIDI IN device in your music software.
  - Please check if you ever set up custom MIDI routing through the UxMIDI Tools software. You can try to press and hold the button for more than 5 seconds and then release it in the power-on state to reset the interface to the factory default state.

- **The external sound module is not responding to the MIDI messages created by the computer:**
  - Please check if the U6MIDI Pro is correctly selected as the MIDI OUT device in your music software.
  - Please check if you ever set up custom MIDI routing through the UxMIDI Tools software. You can try to press and hold the button for more than 5 seconds and then release it in the power-on state to reset the interface to the factory default state.
  
- **The sound module connected to the interface has long or scrambled notes:**
  - This problem is most likely caused by a MIDI loop. Please check if you have set up custom MIDI routing via the UxMIDI Tools software. You can try to press and hold the button for more than 5 seconds and then release it in the power-on state to reset the interface to the factory default state.
  
- **When only use the MIDI port in standalone mode without computer, can it be used without connecting the USB?**
  - The U6MIDI Pro must always be connected to a USB power supply to work properly. In standalone mode you can replace the computer with a standard 5v USB power source.

## CONTACT

Email: [support@cme-pro.com](mailto:support@cme-pro.com)

Website: [www.cme-pro.com](http://www.cme-pro.com)