

U2MIDI PRO

USER MANUAL V06

Hello, thank you for purchasing CME's professional product!

Please read this manual completely before using this product. The pictures in the manual are for illustration purposes only, the actual product may vary. For more technical support content and videos, please visit this page: www.cme-pro.com/support/

IMPORTANT INFORMATION

- **WARNING**

Improper connection may cause damage to the device.

- **COPYRIGHT**

Copyright © 2022 CME Pte. Ltd. All rights reserved. CME is a registered trademark of CME Pte. Ltd. in Singapore and/or other countries. All other trademarks or registered trademarks are the property of their respective owners.

- **LIMITED WARRANTY**

CME provides a one-year standard Limited Warranty for this product only to the person or entity that originally purchased this product from an authorized dealer or distributor of CME. The warranty period starts on the date of purchase of this product. CME

warrants the included hardware against defects in workmanship and materials during the warranty period. CME does not warrant against normal wear and tear, nor damage caused by accident or abuses of the purchased product. CME is not responsible for any damage or data loss caused by improper operation of the equipment. You are required to provide a proof of purchase as a condition of receiving warranty service. Your delivery or sales receipt, showing the date of purchase of this product, is your proof of purchase. To obtain service, call or visit the authorized dealer or distributor of CME where you purchased this product. CME will fulfil the warranty obligations according to local consumer laws.

● SAFETY INFORMATION

Always follow the basic precautions listed below to avoid the possibility of serious injury or even death from electrical shock, damages, fire, or other hazards. These precautions include, but are not limited to, the following:

- Do not connect the instrument during a thunder.
- Do not set up the cord or outlet to a humid place unless the outlet is specially designed for humid places.
- If the instrument needs to be powered by AC, do not touch the bare part of the cord or the connector when the power cord is connected to the AC outlet.
- Always follow the instructions carefully when setting up the instrument.
- Do not expose the instrument to rain or moisture, to avoid fire and/or electrical shock.

- Keep the instrument away from electrical interface sources, such as fluorescent light and electrical motors.
- Keep the instrument away from dust, heat, and vibration.
- Do not expose the instrument to sunlight.
- Do not place heavy objects on the instrument; do not place containers with liquid on the instrument.
- Do not touch the connectors with wet hands

PACKAGE CONTENTS

1. U2MIDI Pro Interface
2. User Manual

INTRODUCTION

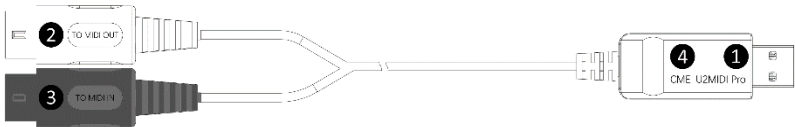
U2MIDI Pro is a professional USB MIDI interface that provides plug-and-play MIDI connectivity to any USB equipped Mac or Windows computer, as well as iOS (via the Apple USB Connectivity Kit) and Android tablets or phones (via Android OTG cable).

The device comes with 1x MIDI IN and 1x MIDI OUT via standard 5-pin MIDI ports. It supports 16 MIDI channels, and is powered by a standard USB bus.

U2MIDI Pro uses the latest 32-bit high-speed processor chip with fast transfer rates via USB. This enables the throughput of large data MIDI messages, achieves the best latency and accuracy on

sub-millisecond level. With the free “UxMIDI Tools” software (developed by CME), you enable flexible routing and filter settings for this interface. All settings will be automatically saved in the interface.

U2MIDI Pro connects to all MIDI products with standard MIDI sockets, such as: synthesizers, MIDI controllers, MIDI interfaces, keytars, electric wind instruments, v-accordions, electronic drums, electric pianos, electronic portable keyboards, audio interfaces, digital mixers, etc.



The U2MIDI Pro has one LED indicator on the USB plug. When the power supply is normal, the green LED light will be lit. When there is data transmission, the green LED light will flash.

1. USB MIDI Port

U2MIDI Pro has a USB-A connector for connecting to a computer to transmit MIDI data.

- When used with a computer, connect the USB-A connector of this interface to the USB-A socket of the computer to start using it without installing any drivers. The computer's USB port can power the U2MIDI Pro. In different operating systems and versions, U2MIDI Pro may be displayed as a different class device name, such as "U2MIDI Pro" or "USB audio device", and the name will be followed by the the

words IN/OUT.

- When used as a standalone MIDI router, mapper and filter without computer, connect this interface to a standard USB charger or power bank through the matching USB cable to start using the interface.

Note: Please choose a power bank with Low Power Charging mode (for Bluetooth headphones such as AirPods, and fitness trackers) and does not have automatic power saving function.

2. [TO MIDI OUT →] White connector

Please plug this connector into the MIDI OUT jack of an external MIDI device to receive MIDI messages from the external MIDI device on the computer.

3. [TO MIDI IN →] Black connector

Please plug this connector into the MIDI IN jack of an external MIDI device to send MIDI messages from the computer to the external MIDI device.

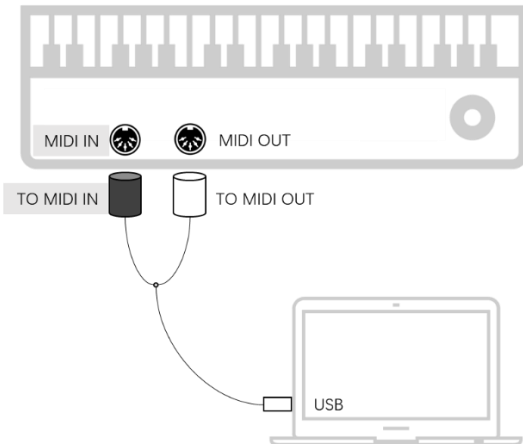
4. LED Indicators

U2MIDI Pro has a green LED indicator, which is used to indicate the working status of the MIDI port and power supply respectively. When the port has MIDI data being transmitted, the indicator light will flash accordingly.

CONNECTION

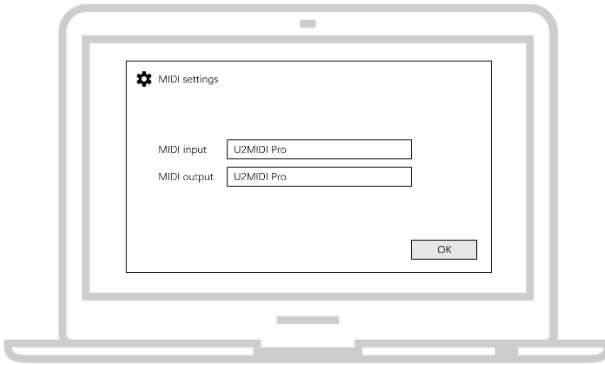
1. Connect the U2MIDI Pro to the USB-A port of your computer. If the computer does not have a USB-A port, you can use the corresponding adapter cable (not included) or a USB HUB. After connecting, the green LED indicator of the U2MIDI Pro will light up and the computer will automatically recognize the device.
2. Connect the white 5-pin connector [TO MIDI OUT] of your U2MIDI Pro to the MIDI Out or Thru of your MIDI device. Next, connect the black 5-pin connector [TO MIDI IN] of your U2MIDI Pro to the MIDI In of your MIDI device.

Note: Only one MIDI plug can be connected to the MIDI device according to actual needs.



3. Open the music software on your computer, set the MIDI input

and output ports to U2MIDI Pro on the MIDI settings page, and get started.



Note: If you want to use U2MIDI Pro standalone without connecting to a computer, you can directly connect a USB power supply or power bank.

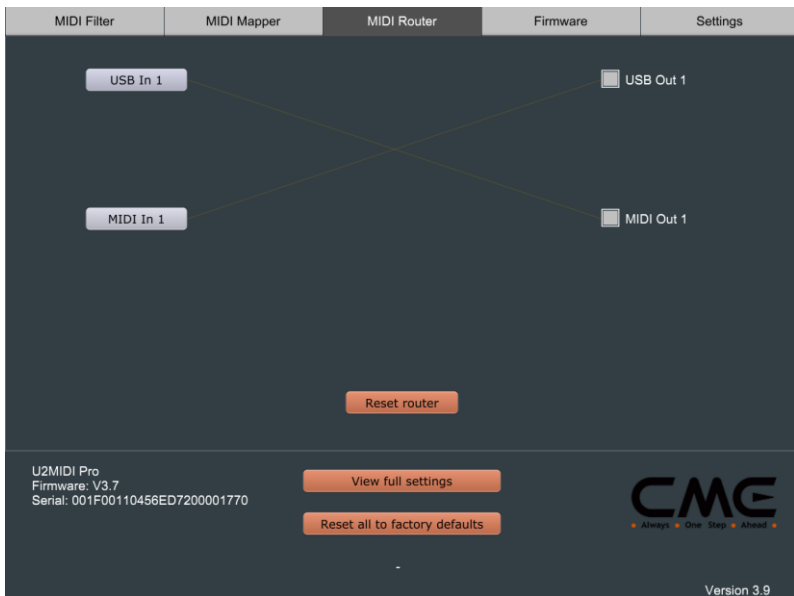
SOFTWARE SETTINGS

Please visit www.cme-pro.com/support/ to download the free software “UxMIDI Tools” for macOS or Windows (compatible with macOS X and Windows 7 - 64bit or higher) and user manual. You can use it to upgrade the firmware of U2MIDI Pro products at any time and get the latest functions. At the same time, you can also perform a variety of flexible settings.

1. MIDI Router Settings

MIDI Router is used to view and configure the signal flow of MIDI messages in your CME USB MIDI hardware device.

Note 1: All routing settings will be automatically saved to the internal memory of the U2MIDI Pro.



2. MIDI Mapper settings

MIDI Mapper is used to reassign (remap) the input data of the connected and selected device so that it can be output according to custom rules that are defined by you.

Note: Before you can use the MIDI Mapper function, the U2MIDI Pro's firmware must be updated to version 3.6 (or higher), and the UxMIDI Tools software must be updated to version 3.9 (or higher).

Note: All Mapper settings will be automatically saved to the internal memory of the U2MIDI Pro.



3. MIDI Filter Settings

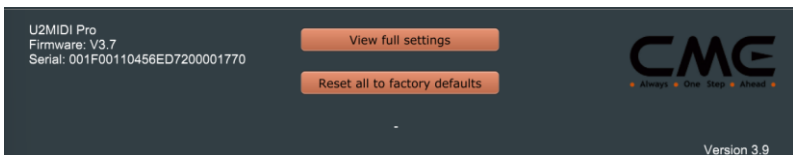
MIDI Filter is used to block certain types of MIDI message in a selected input or output port it no longer is passed through.

Note: All Filter settings will be automatically saved to the internal memory of the U2MIDI Pro.



4. View full settings

The View Full settings button is used to view the filter, mapper, and router settings for each port of the current device - in one convenient overview.



5. Firmware Upgrade

When your computer is connected to the internet, the software automatically detects whether the currently connected CME USB

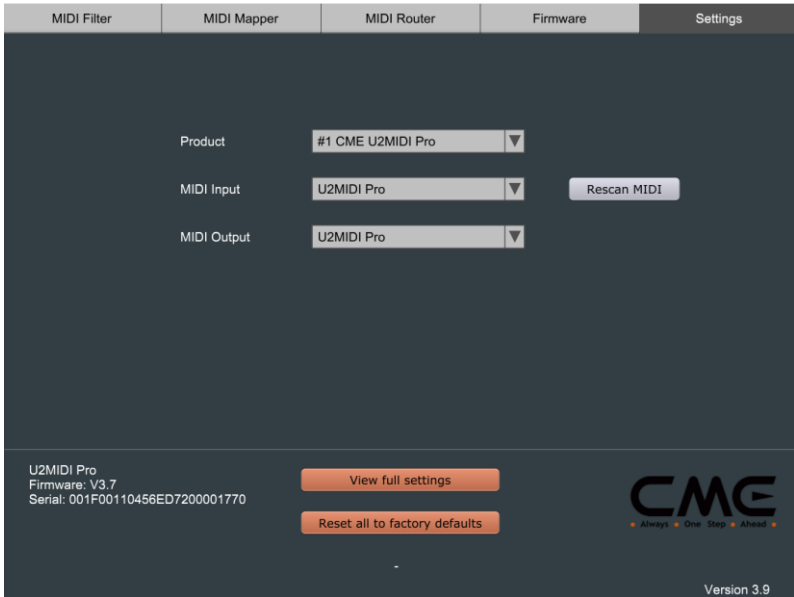
MIDI hardware device is running the latest firmware and requests an update if necessary.

Note: After each upgrade to a new firmware version, it is recommended to restart the U2MIDI Pro.

The screenshot shows the U2MIDI Pro web interface. At the top, there are five tabs: MIDI Filter, MIDI Mapper, MIDI Router, Firmware, and Settings. The Firmware tab is selected. The main area displays a list of USB and MIDI ports with checkboxes for enabling them. A modal dialog box is centered on the screen with the title "New firmware available". The dialog text reads: "A new firmware is available (Version 3.7) for the connected product, would you like to upgrade your product (current firmware is V3.4) ?". Below the text are two buttons: "No" and "Yes, upgrade". Below the dialog is a "Reset router" button. At the bottom of the interface, there is a footer area containing the device name "U2MIDI Pro", the current firmware version "Firmware: V3.4", and the serial number "Serial: 001F00110456ED7200001770". To the right of this information are two buttons: "View full settings" and "Reset all to factory defaults". The CME logo is on the right, with the tagline "Always One Step Ahead". At the bottom center, it says "Firmware must be updated" and at the bottom right, "Version 3.9".

6. Settings

The Settings page is used to select the CME USB MIDI hardware device model and port to be set up and operated by the software. When a new device is connected to your computer, use the [Rescan MIDI] button to rescan the newly connected CME USB MIDI hardware device so that it appears in the drop-down boxes for Product and Ports. If you have multiple CME USB MIDI hardware devices connected at the same time, please select the product and port you want to set up here.



SYSTEM REQUIREMENTS

Windows:

- Any PC with a USB port.
- Operating System: Windows XP (SP3) / Vista (SP1) / 7 / 8 / 10 / 11 or higher.

Mac OS:

- Any Apple Macintosh computer with a USB port.
- Operating System: Mac OS X 10.6 or later.

iOS:

- Any iPad, iPhone, iPod Touch series products. Requires

separate purchase of Apple Camera Connection Kit or Lightning to USB Camera Adapter.

- Operating system: Apple iOS 5.1 or later.

Android:

- Any tablet and mobile phone. Requires separate purchase of USB OTG adapter cable.
- Operating System: Google Android 5 or higher.

SPECIFICATIONS

Technology	Standard USB MIDI, Compliant with USB class, Plug and Play
MIDI Connectors	1x 5-pin [TO MIDI OUT ➔] White connector, 1x 5-pin [TO MIDI IN ➔] Black connector
LED Indicators	1 LED light
Compatible Devices	Devices with standard 5-pin MIDI socket, Computers and USB Host devices with USB-A socket
MIDI messages	All messages in the MIDI standard, including notes, controllers, clocks, sysex, MIDI timecode, MPE
Transmission Delay	Close to 0ms
Power Supply	USB-A Socket. Powered via Standard 5V USB bus or charger
Firmware Upgrade	Upgradable via USB port using UxMIDI Tools

Power Consumption	75 mW
Length	2 meters / 6.56 feet
Weight	81.5 g / 2.87 oz

Specifications are subject to change without notice.

FAQ

- **The LED light of U2MIDI Pro does not light up:**
 - Please check if the USB plug is inserted into the USB port of the computer or host device.
 - Please check if the connected computer or host device is powered on.
 - Please check if the USB port of the connected computer supplies power (ask the device manufacturer for information)?
- **The computer does not receive MIDI messages when playing a MIDI keyboard:**
 - Please check if the U2MIDI Pro is correctly selected as the MIDI IN device in your music software.
 - Please check if you ever set up custom MIDI routing through the UxMIDI Tools software. You can try to reset the interface to the factory default state in the software.
- **The external sound module is not responding to the MIDI messages created by the computer:**

- Please check if the U2MIDI Pro is correctly selected as the MIDI OUT device in your music software.
- Please check if you ever set up custom MIDI routing through the UxMIDI Tools software. You can try to reset the interface to the factory default state in the software.
- **The sound module connected to the interface has long or scrambled notes:**
 - This problem is most likely caused by a MIDI loop. Please check if you have set up custom MIDI routing via the UxMIDI Tools software. You can try to reset the interface to the factory default state in the software.
- **When only use the MIDI port in standalone mode without computer, can it be used without connecting the USB?**
 - The U2MIDI Pro must always be connected to a USB power supply to work properly. In standalone mode you can replace the computer with a standard 5v USB power source.

CONTACT

Email: info@cme-pro.com

Website: www.cme-pro.com