



WIDI APP

USER MANUAL V1.0

Please read this manual completely before using this product. The software and firmware will be updated continuously. All the illustrations and texts in this manual may be different from the actual situation and are for reference only.

COPYRIGHT

2021 © CME PTE. LTD. All rights reserved. Without the written consent of CME, all or part of this manual may not be copied in any form. CME is a registered trademark of CME PTE. LTD. in Singapore and/or other countries. Other product and brand names are trademarks or registered trademarks of their respective companies.

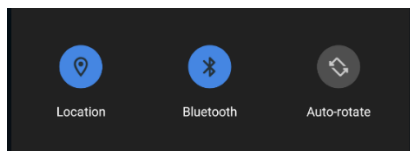
WIDI APP

Please visit www.bluetoothmidi.com and download the free WIDI App. It includes iOS and Android versions and is the setting center for all new WIDI products (excluding WIDI Bud, including WIDI Bud Pro). You can get the following value-added services through it:

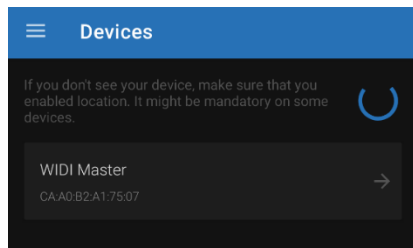
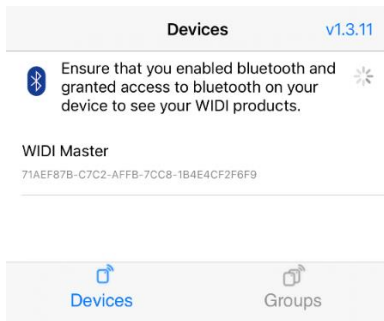
- Upgrade the firmware of WIDI products at any time to get the latest features.
- Customize the device name for WIDI products and store the automatic pairing settings.
- Set up a one-to-multi group connection.

CONNECT

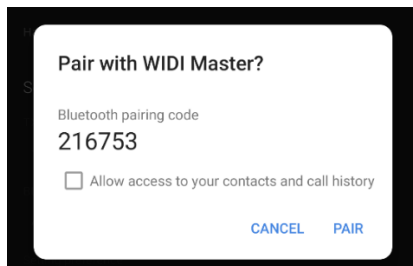
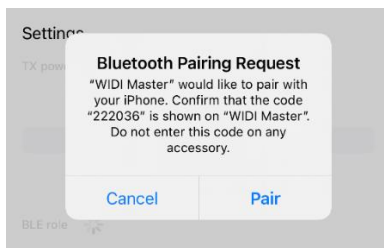
1. First, please connect your WIDI product to MIDI or USB power supply and confirm that it is not connected to other Bluetooth devices. Confirm the LED light status is blue and slowly flashing.
2. On the device where the WIDI App is installed, turn on the Bluetooth and location information switches in the system settings. And make sure that the distance between the device and the WIDI product is within 10 meters (33 feet).



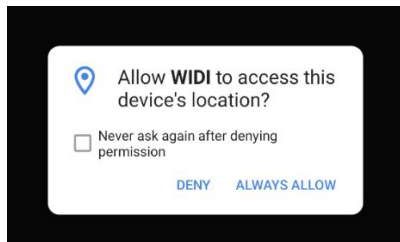
3. Open the WIDI App. At this time, the WIDI App will automatically search for all nearby WIDI devices that can be connected and will display them in the [Device] list.



- Click the name of the WIDI device that needs to be set in the list. The App will pop up a [Bluetooth Pairing Request] prompt window. Please click [Pair] to connect and enter the details page of the WIDI device.

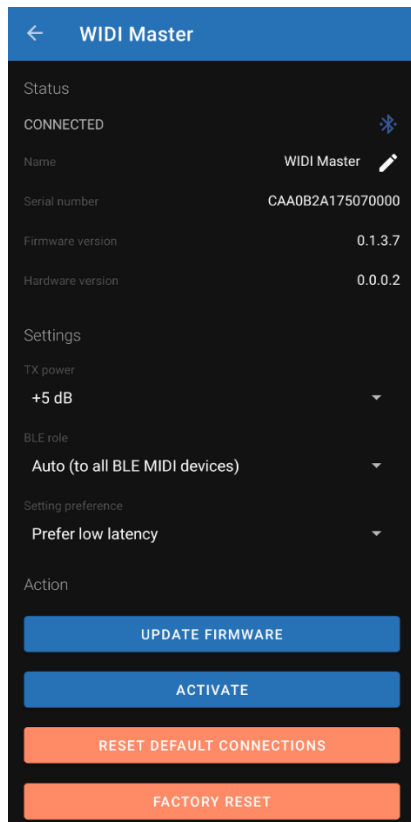
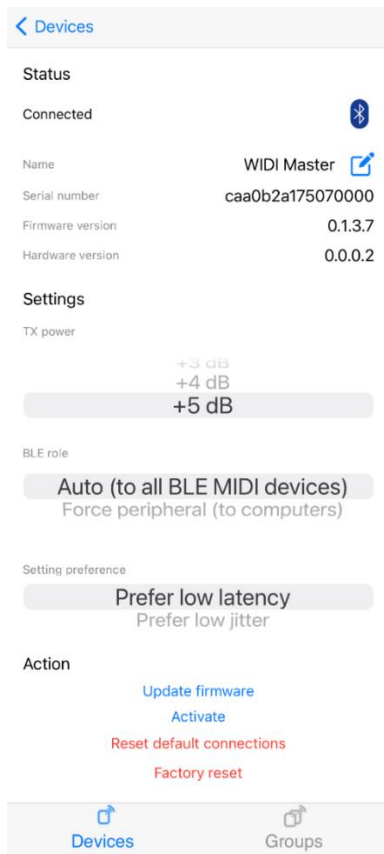


Note: If it is the first time to run WIDI App, it may pop up [Allow WIDI to use wireless data?] and [Allow WIDI to access this device's location?] prompt windows. In this case please click [Wireless LAN and cellular network] or [Wireless LAN only], and [Always Allow] location information (this item is necessary for connecting Bluetooth MIDI devices for setting and upgrading permissions).

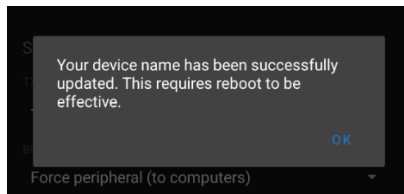
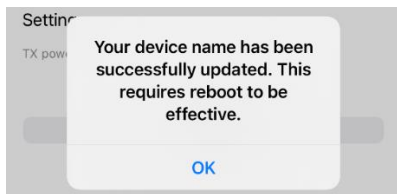
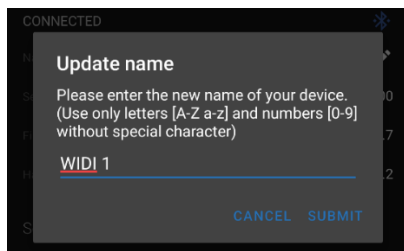
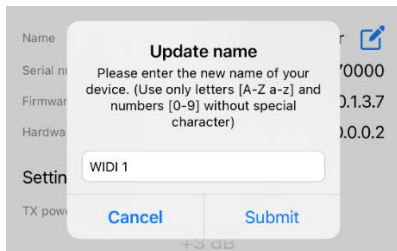


DEVICE

On the WIDI device page, you can view the detailed information of the device and make the following various settings.



- Change the device name:** Click the pen-shaped icon behind the device name, type in a new name and [Submit] to write the new name to the WIDI device. If you need to see the result of the change immediately, please return to the App device list page, and disconnect then reconnect the power of the WIDI device to refresh it.



- Change the transmit power:** the greater the transmit power, the longer the connectable distance of the WIDI device but the greater the power consumption. If necessary, you can reduce the transmission power and power consumption by reducing this parameter. This setting status will be automatically saved to the WIDI device without additional confirmation.



- BLE role:** The Bluetooth LE standard sets devices into two roles: central and peripheral. The central role is responsible for scanning the peripheral and establishing a connection. The peripheral role is responsible for advertising its status and waiting for the central to initiate

a connection. The default state of the WIDI device is [Auto] role. When set to [Auto], WIDI will switch between the two roles of central and peripheral. This starts an automatic search and will activate the connection to the first discovered Bluetooth MIDI peripheral automatically. Or it will accept Bluetooth connection requests sent by the computer or other BLE MIDI host device. If the role status is changed to [Forced Peripheral], WIDI will only advertise its own status and wait for the connection of other Bluetooth MIDI host devices (such as computers, mobile phones, or Pads, etc.).

BLE role

Auto (to all BLE MIDI devices)

Force peripheral (to computers)

BLE role

Auto (to all BLE MIDI devices)

Force peripheral (to computers)

- **Setting preferences:** [Prefer low latency] allows the WIDI device to work at the highest transmission speed, so as to transmit large amounts of data (such as real-time performance information). [Prefer low jitter] allows the WIDI device to work in the most accurate transmission state for more stable data transmission (such as MIDI clock information).

Setting preference

Prefer low latency

Prefer low jitter

Setting preference

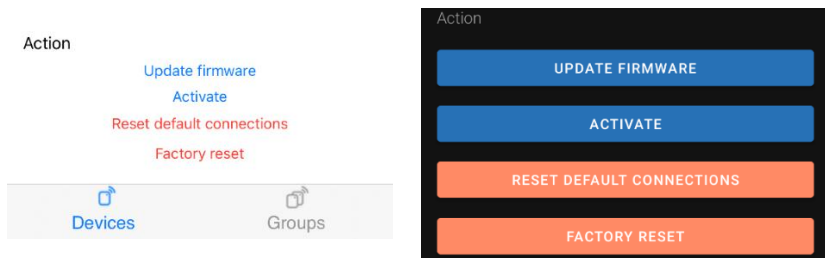
Prefer low latency

Prefer low jitter

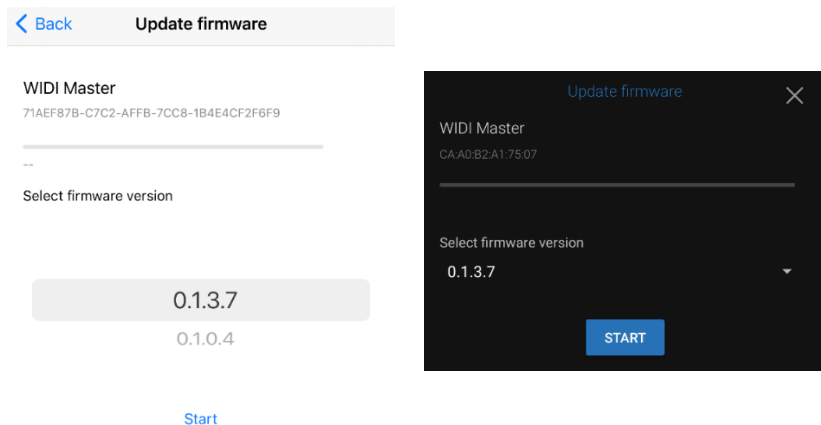
- **Upgrade firmware:** CME will continue to release firmware updates for WIDI products to improve product performance or add new functions in response to user needs. CME recommends that you use this function to ensure that WIDI products always use the latest firmware. The WIDI App needs to access the CME server to obtain the latest firmware, so

please make sure that the device on which you have installed the WIDI App can access the Internet.◦

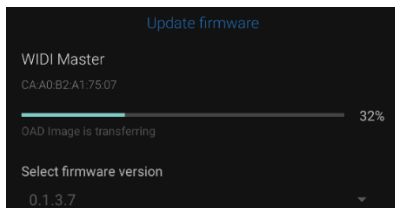
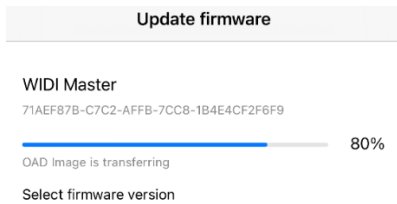
1. Click [Update Firmware] to enter the firmware update page.



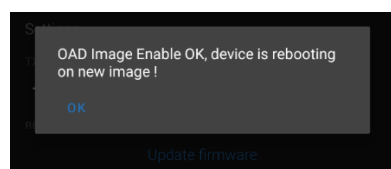
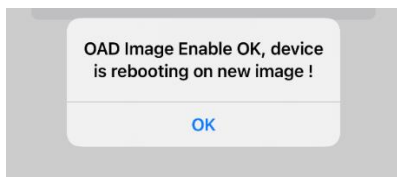
2. Select the firmware version and click [Start].



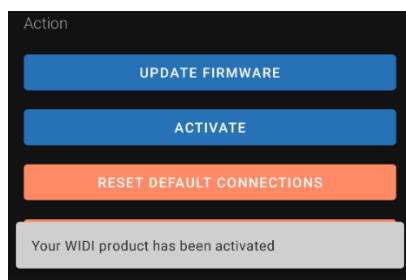
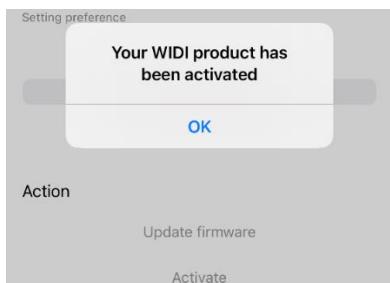
3. The progress bar will show the firmware download and writing progress in real time. At this time, the LED light of your WIDI device will turn green and flash quickly.



- After the firmware is updated, click [OK]. The WIDI device will automatically restart with the new firmware, and the WIDI App will automatically return to the device list page.

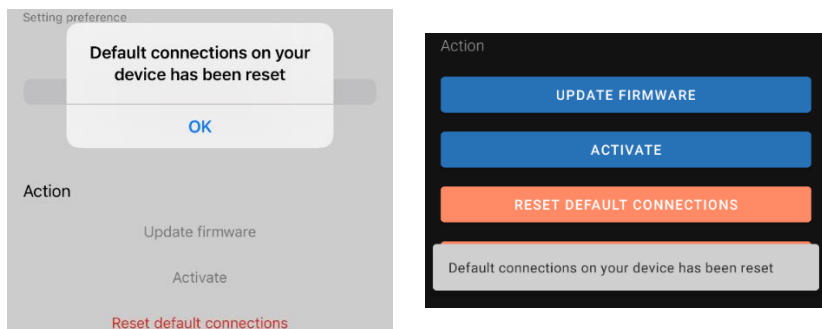


- Activate:** When the WIDI device (with old firmware) is in an inactive state (LED is red) due to some unconventional operations, WIDI will not be able to send and receive MIDI data normally. At this point, you can click the [Activate] function to reactivate it.

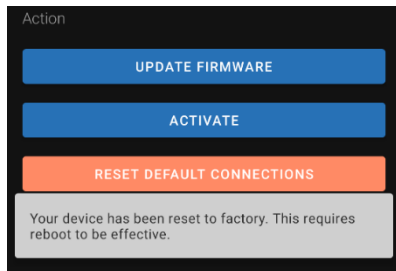
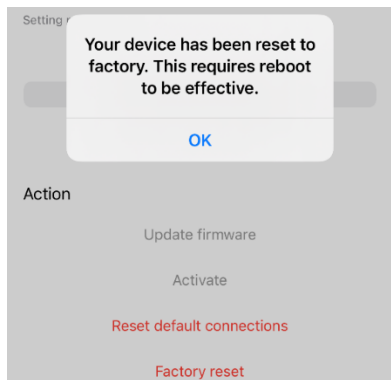


- **Reset default connections:** If you want to clear the default group connection that has been set, you can connect to the WIDI master central device in the existing group through the App and click [Reset default connections], all the predefined peripheral addresses saved in the central will all be cleared. The connection settings of the device are restored to the initial state.

For detailed instructions on group settings, please refer to the description in the [Group] section of this document.



- **Factory reset:** Click [Factory reset] to restore all the parameters and settings of the WIDI device to the default values (not including resetting default group connections). Please note that you need to disconnect and reconnect the power of the WIDI device to make the operation result take effect.

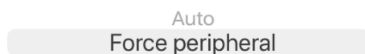


GROUP

The group function allows you to group up to 5 WIDI devices. After the group setting has been processed successfully, every time you reboot all the WIDI devices in the group will automatically connect to each other and perform two-way MIDI transmission according to the set 1-to-multi connection mode.

1. First, please turn on the power of only one WIDI device and change the [BLE Role] to [Force peripheral] on the device page, and then return to the App device page.

BLE role

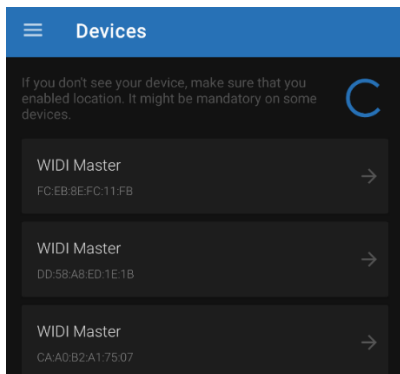
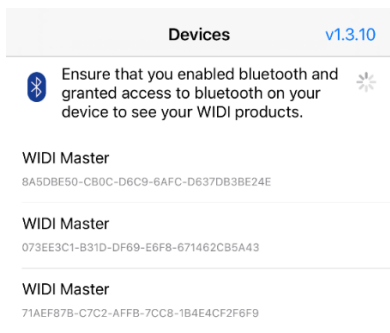


BLE role

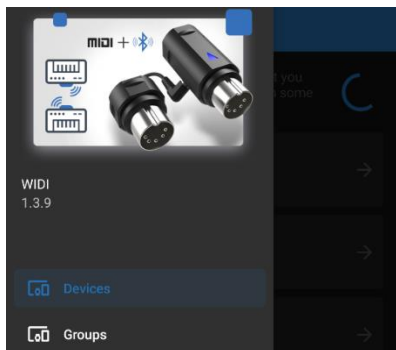
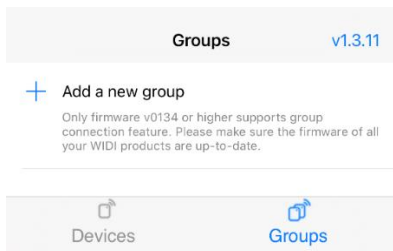
Auto (to all BLE MIDI devices)

Force peripheral (to computers)

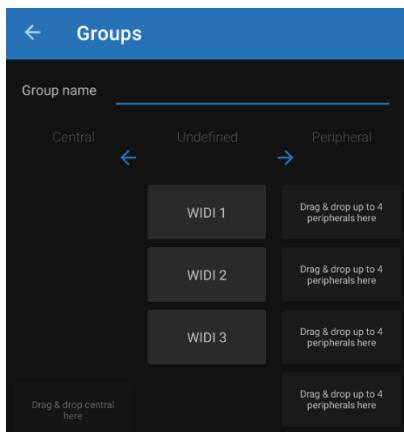
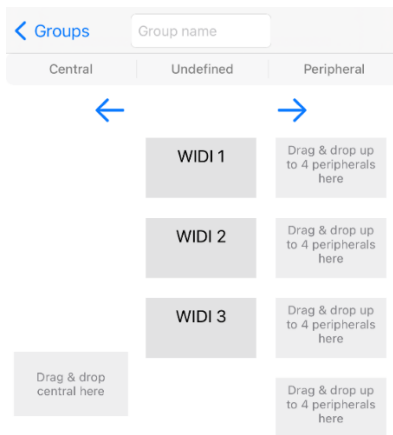
2. Disconnect the power of this WIDI device, connect the power of the second WIDI device, and repeat the above operations until all the WIDI devices that need to be grouped have completed the above settings.
3. Turn on the power of all WIDI devices. At this time, all these WIDI devices will be displayed in the device list.



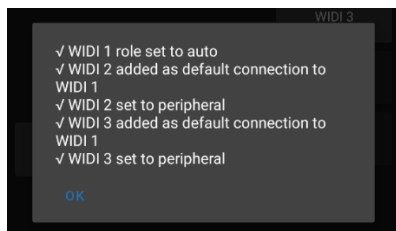
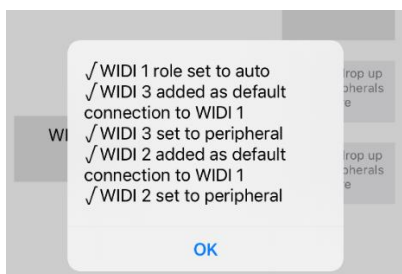
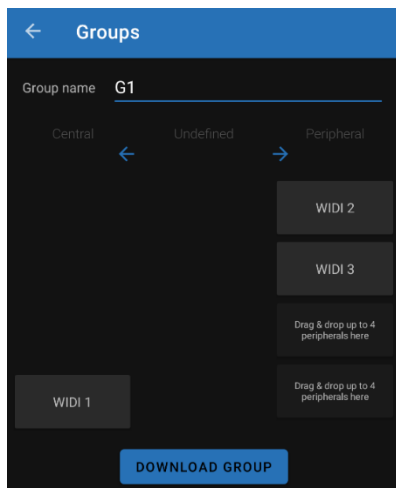
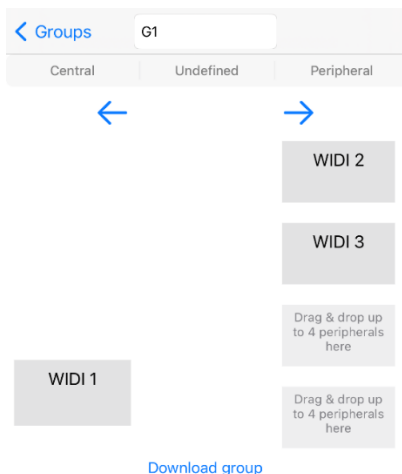
4. Click [Group] in the lower right corner of the iOS App or open the sidebar menu through the menu icon in the upper left corner of the Android App and click [Group] to enter the group page, and then click [Add a new group] on the iOS App or click (+) plus icon on the Android App.



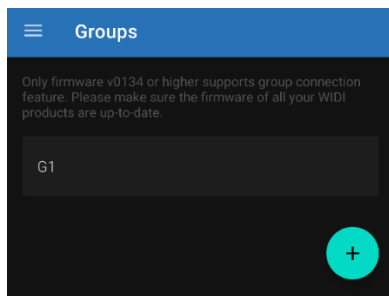
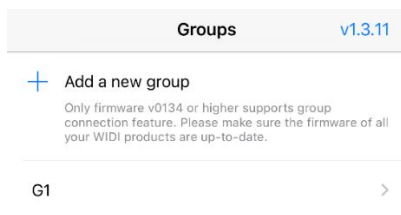
5. Click [Group Name] at the top to name the group. After that, drag and drop the WIDI device icons in the middle of the screen, and place them on the left [Central] and the right [Peripheral].



6. Click [Download Group]. Next the WIDI App will complete the settings and a confirmation prompt will pop up. Please note this can take a while before completely processed.



- After completing the group settings, all WIDI devices will automatically restart and connect in the group according to the settings. The light blue (turquoise) LED light indicates the central, and the blue LED light indicates the peripheral. The [Group] page of the WIDI App will display the name of the created group. Click the name to set it again, or slide the name to the right to delete the created group.



CONTACT

Email: info@cme-pro.com

Website: www.bluetoothmidi.com